



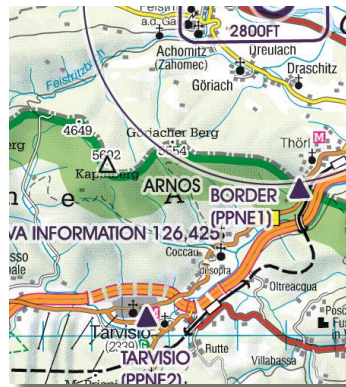
Rogers Data VFR Charts – ICAO Charts

according to ICAO Annex 4, EU-Regulations, AIP

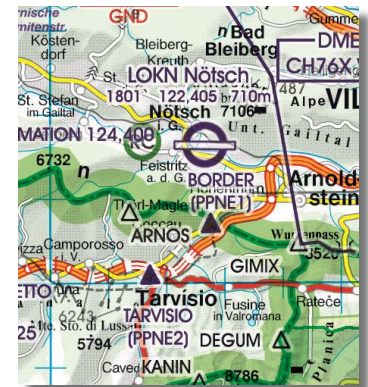
Name designations for significant points

Rogers Data VFR charts contain significant points for visual flights.
(fig: Border Crossing Point “ARNOS”, Compulsory Reporting Point “BORDER (PPNE1)”) (PPNE2)”)

Austria Rogers Data 200k



Austria Rogers Data 500k

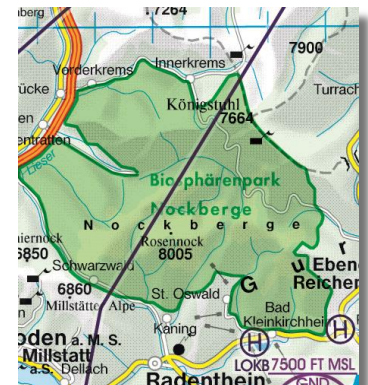
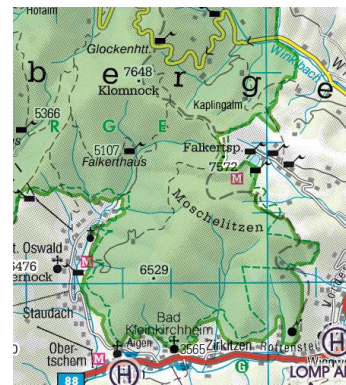


National parks und nature reserves

Rogers Data VFR aeronautical charts contain nature reserves and national parks with restrictions regarding aviation.

They provide a practical overview to avoid violations of the relevant legal provisions.

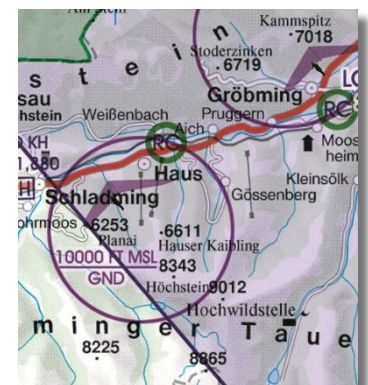
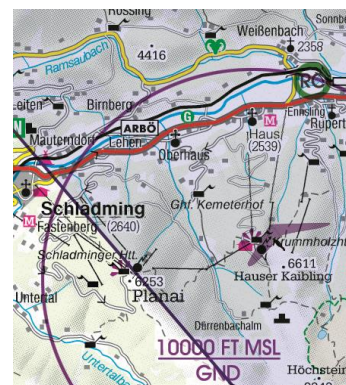
(fig: National park “Biosphärenpark Nockberge” in Carinthia)



Aerial sporting and recreational activities

Rogers Data VFR aeronautical charts contain the aerial sporting areas where increased traffic and RC (radio controlled) model flying has to be expected.

(fig: Aerial sporting and recreational area “Schladming” including the RC model flying area in “Gebiet Haus im Ennstal”)





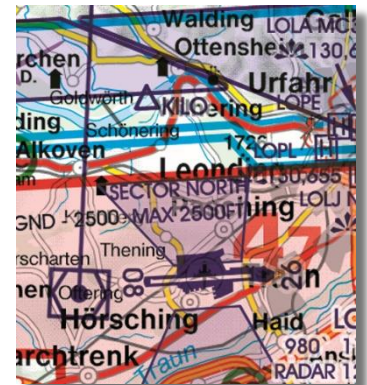
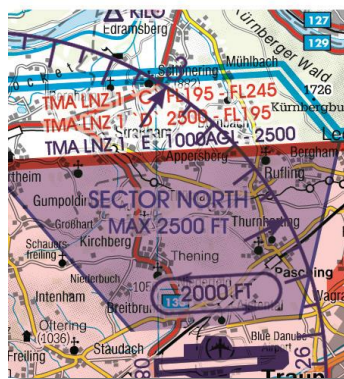
Austria Rogers Data 200k

Austria Rogers Data 500k

VFR-Sectors

Rogers Data VFR aeronautical charts contain arrival- and departure sectors.

(fig: „SECTOR NORTH“ at the airport LOWL/Linz-Hörsching)



TRA-Temporary reserved airspace

Rogers Data VFR aeronautical charts contain Airspaces classified as airspace C and D, published in vertical and lateral dimensions.

When a TRA is activated this airspace changes temporary to class G.

(fig: TRA „Spitzerberg S“)

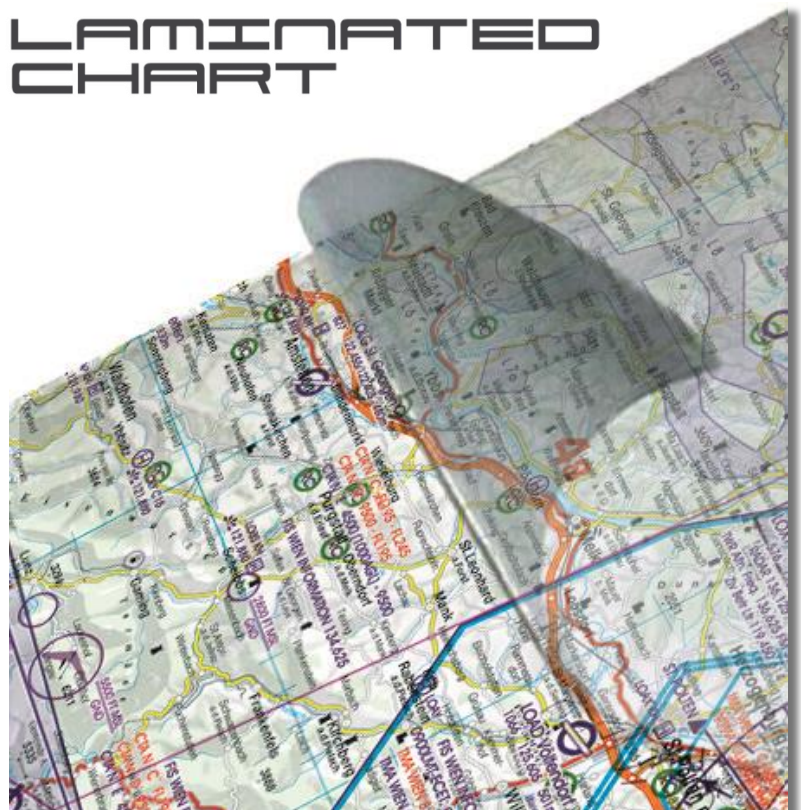


Charts laminated with RDtech® are resistant, writeable & erasable

With the 2019 edition Rogers Data has started to produce aviation charts exclusively in laminated versions. The great advantage of the RDtech® technology is that all Rogers Data aeronautical charts are almost tearproof and can therefore be folded many times.

They are designed to withstand excessive use while being safe and easy to use. Furthermore, this special lamination (coating) minimizes solar reflections and mirroring. It is designed to be matt so that reflections from sunlight or during night flights when using a flashlight are avoided as far as possible.

LAMINATED CHART





**ROGERS
DATA**

VFR charts | pilot accessories

However, the surface is still so smooth that it can be written on several times with our optimized permanent RDtech® pen set. Marked flight paths and inscriptions can be removed without residue with our optimized RDtech® spray or our RDtech® cleaning tissue. All this can be repeated several times. The laminated RDtech® VFR aviation chart always looks like new.

Tests have confirmed resistance at temperatures between -20°C and +80°C. The suitability for use in low temperatures or in a hot cockpit has been proven.



Austria Rogers Data 200k



Austria Rogers Data 500k



Display of airspace structure on Rogers Data VFR charts

Rogers Data VFR aeronautical charts provide an optimal readable display of airspaces and, due to the selected display, allow the recognition of overlapping airspace boundaries.

In each airspace box the airspace limits are clearly marked (listed). This makes it possible to quickly capture and understand even complex airspace structures, such as those found around high-density airfields and airports..

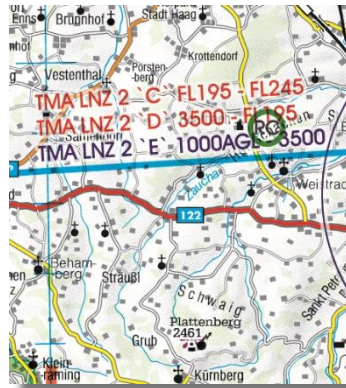


Austria Rogers Data 200k

Austria Rogers Data 500k

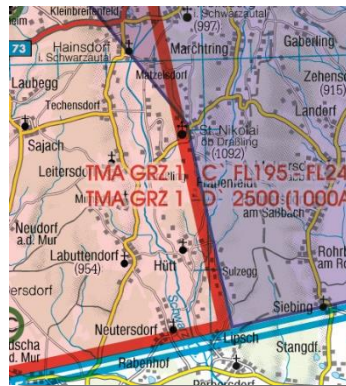
Labelling of airspace structure of Rogers Data VFR Chart

On the Rogers Data aeronautical charts, airspaces without mandatory clearance are shown in the font-colour BLUE and airspaces subject to mandatory clearance in the font-colour RED. In each airspace box resulting from the airspace structure, the information on the airspace structure is shown in ascending order from the ground to flight level FL 125.



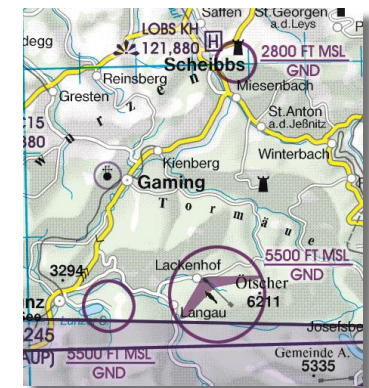
Colour-highlighted airspace structure

CTRs (control zones), RMZs (radio mandatory zones) and airspace restrictions are shown in red. The airspace with it's structure is shown in blue and nature reserves with flight restrictions are shown in green.



Terrain and topographic background map

Plastic representation of the terrain with the special topographic background map, which has shading and relief and gives a dynamic 3D impression. Rogers Data uses a uniform topographic map throughout Europe, which provides the necessary level of detail in sparsely populated areas or in mountainous regions and remains easy to read even in metropolitan areas.



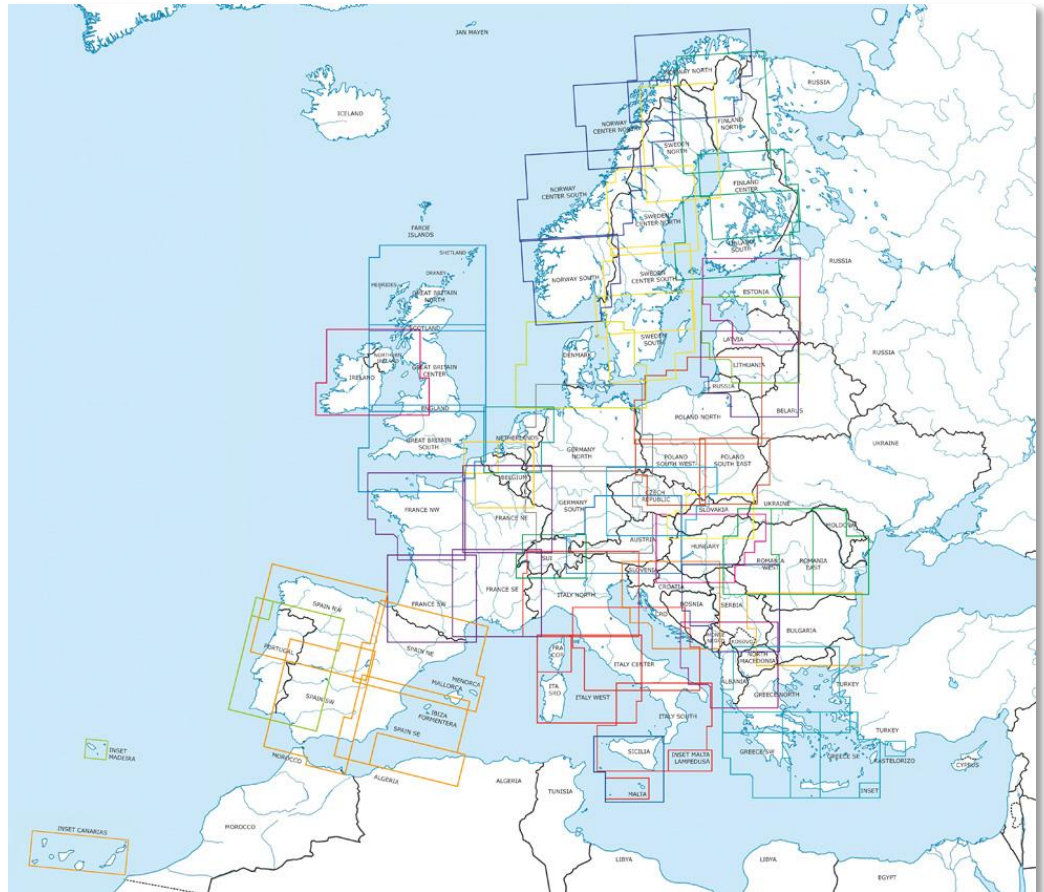


Identical Layout

Rogers Data VFR charts comply with the relevant provisions of ICAO Annex 4 "Aeronautical Charts", as well as the relevant EU regulations. The uniform chart projection for Western Europe ensures that the charts fit together seamlessly.

Your Advantage:

Rogers Data provides VFR charts – ICAO charts for almost every country in Europe. From North to South, from East to West. Same look, same feeling, same quality. All Rogers Data VFR charts have the same design, the same chart image and the same quality. The uniform and familiar layout of the maps allows you to find our way easily. No matter in which country you are flying.



Current and useful maps

The relevant regulations of the EU-Regulations and ICAO Annex 4 require that current and appropriate VFR aeronautical charts must be kept on board. This means that VFR aeronautical charts must show the current airspace structure, frequencies and procedures and include the route relevant for the flight, including alternative measures.

All Rogers Data aeronautical charts - for all available countries - are updated to the current edition and made available at the begin of the flying season in spring each year. The current aeronautical charts are now available at our webshop or at one of the Rogers Data resellers in your area.





Digital aeronautical charts

A major advantage of the Rogers Data VFR aeronautical charts is the fact that they are available as digital and as print versions. Having the identical chart image on screen and on paper chart in your hand has proven to be an advantage.

In order to cover the demand for digital aeronautical charts, Rogers Data works together with a large number of app-manufacturers and with manufacturers of certified built-in navigation devices.

Back-Up according to ICAO Annex 4

ICAO Annex 4 specifically suggests the option of a back-up using paper charts. By having the Rogers Data paper charts with you, you meet the requirement for the availability of a back-up system. The printed version of the VFR aeronautical charts have advantages in flight preparation, in flight path selection and offer a good overview due to their size.



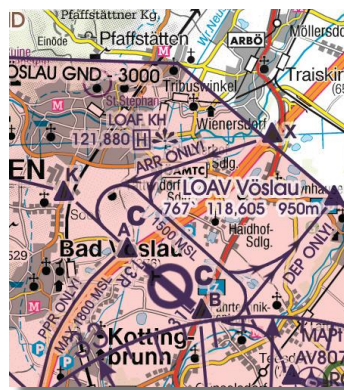
Special features

Rogers Data Charts

Rogers Data VFR aeronautical charts in the scale of 1:200.000 show the traffic circuits and approach procedures due to the higher resolution. The towns and villages are featured true-to-scale.

(fig: traffic circuits and approach procedures LOAV Bad Vöslau)

Austria Rogers Data 200k



Austria Rogers Data 500k



We have chosen the scale 1:200.000 since it is the scale at which the towns are still shown on the map in their actual shape and dimensions. In the next larger scale, localities are already standardised with circle symbols and are no longer shown in this level of detail. Aeronautical charts at a high resolution scale of 1:200.000 are available from Rogers Data for the mountainous region of Austria and Slovenia. The level of detail of these maps is especially popular with VFR pilots because, spots like, the home community, a castle, a ruin, alpine huts or excursion destinations can be identified on the map.

The current aeronautical charts are now available at our webshop or at the Rogers Data reseller in your area.

